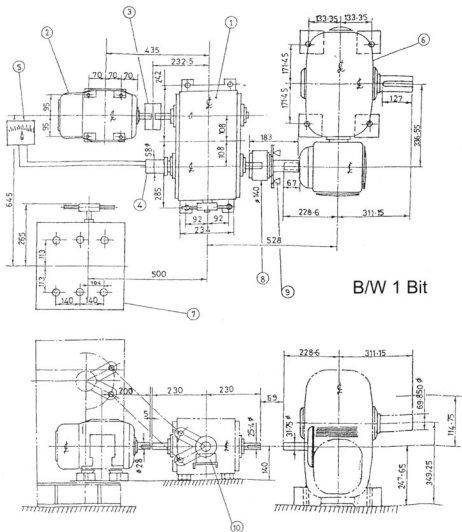


# Details & Dimensions

## COAL FEEDER PIV DRIVE

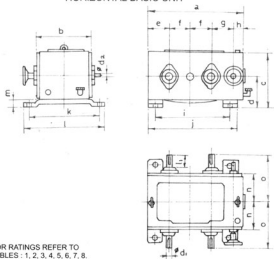
MODEL RU - 25L ( SPECIAL ) FOR THERMAL POWER PLANT



### BILL OF MATERIAL

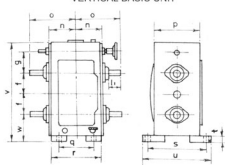
SR. NO.	NAME		QTY
1	P.I.V. + SLIPPING LEVER	EXCEL RU - 25L 4:1	1
2	MOTOR - 132 - S	3 KW - 4 HP	1
3	FLEXIBLE PIN BUSH COUPLING - 6 PINS		1
4	TACHO GENERATOR		1
5	SPEED INDICATOR 0 - 2000 RPM		1
6	WORM REDUCTION GEAR BOX UD - 800	GREAVES	1
7	ACTUATOR - PCDE - 0404	NOT OUR SUPPLY	1
8	AUTOGARD COUPLING MODEL: 206, SIZE: 3 / 140	DRG. NO. - E. I. G. / A-G/92	1
9	LIMIT SWITCH ROLLER PLUNGER	SIEMENS / OTHERS	2
10	LIMIT SWITCH PLUNGER	SIEMENS / OTHERS	1

### HORIZONTAL BASIC UNIT



FOR RATINGS REFER TO  
TABLES : 1, 2, 3, 4, 5, 6, 7, 8.

### VERTICAL BASIC UNIT



A & B, C & D, A & C, B & D  
ABCD-DRIVESHAFT  
ARRANGEMENT



### HORIZONTAL BASIC UNIT

### VERTICAL BASIC UNIT

UNIT SIZE		a	b	c	d	e	f	g	h	i	j	k	l	m	n	o	d1 $\phi$	d2 $\phi$	l1	p	q	r	s	t	u	v	w
RU 12	EI 12	383	196	220	125	111	80	84	27	412	447	150	187	19	98	155	24	10	57	201	150	197	235	19	274	398	130
RU 23 - 25, EI 23 - 25 EIB 23 - 25		476	279	263	146	108	108	108	44	378	454	356	406	28	140	230	28	15	70	235	184	234	285	22	335	498	130
EIBB 23 - 25		460	220	260	150	135	95	100	35	440	480	250	300	40	110	194	28	15	64	220	200	235	300	15	345	475	150
EI - 4	A - 4	712	310	350	200	204	152	152	52	755	810	295	345	50	155	255	38	15	80	300	295	345	410	11	470	723	215
EI - 5	A - 5	830	380	442	250	235	180	180	55	870	930	360	425	58	190	325	45	15	110	384	360	425	520	15	590	845	250
EI - 6	A - 6	1000	460	555	300	285	215	215	70	1060	1850	410	510	45	230	400	60	15	140	460	410	510	650	15	755	1015	300